

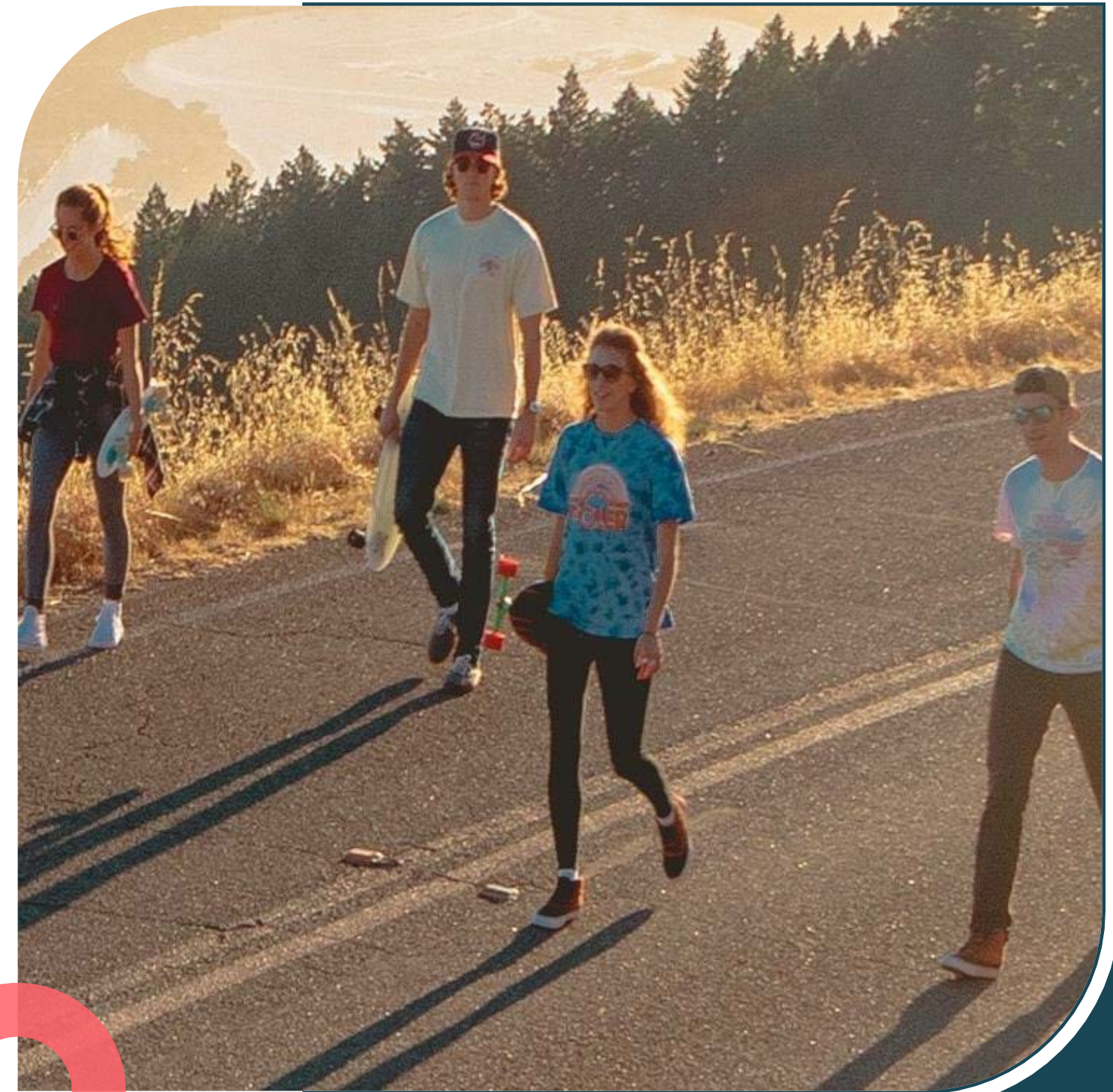
ESL

EXPOSOURCING LTD.

DISCOVER SOLVE SHIP

*Rhythm Of Fashion & Aristocracy*

APPROVED BY BANGLADESH GARMENTS BUYING HOUSE  
ASSOCIATION & DEPARTMENT OF TEXTILES ( BTMC)



# CONTACT DETAILS



Name of Company	: EXPO SOURCING LTD.
Year of Establishment	: 2022
Nature of Business	: 100% Export oriented garments buying & selling.
Corporate Office Address	: House No. : 482, Road No. : 03, Sector No. : 12, Uttara, Dhaka – 1230, Bangladesh.
Telephone	: +88-9638 -811 955
Mobile	: +88 01811 242 733
E-mail	: info@exposourcingbd.com
Web :	: www.exposourcingbd.com
B.G.M.E.A Registration No.	: AM-1282

## :: Banking Partner ::



UNITED COMMERCIAL BANK PLC  
Sonargaon Janapath Branch  
10, Sonargaon Janapath, Sector 11,  
Uttara Model Town, Dhaka-1230.  
Email: sng@ucb.com.bd  
SWIFT : UCBLBDDH  
www.ucb.com.bd

Account Name : Expo Sourcing Ltd



# VISION & MISSION

## Vision

To become a reliable global organization that demonstrates excellence and quality through innovation and a forward looking approach.

## Mission

Setting up an ethical business standard by providing a safe and rewarding work environment. Implementing eco friendly technologies through trained and knowledgeable workforce to offer highest level of customer satisfaction.

Ensuring sustainable growth through innovation, talents and operational efficiencies.

# OUR VALUES

- **Excellence**

We go all-out to excel in every aspect of our business and approach every challenge with a determination to succeed.

- **Social Responsibility**

We care for future generation of our beloved country. Our Environment care is always ensured by green technology and management.

- **Accountability**

We take responsibility for individual and collective actions.

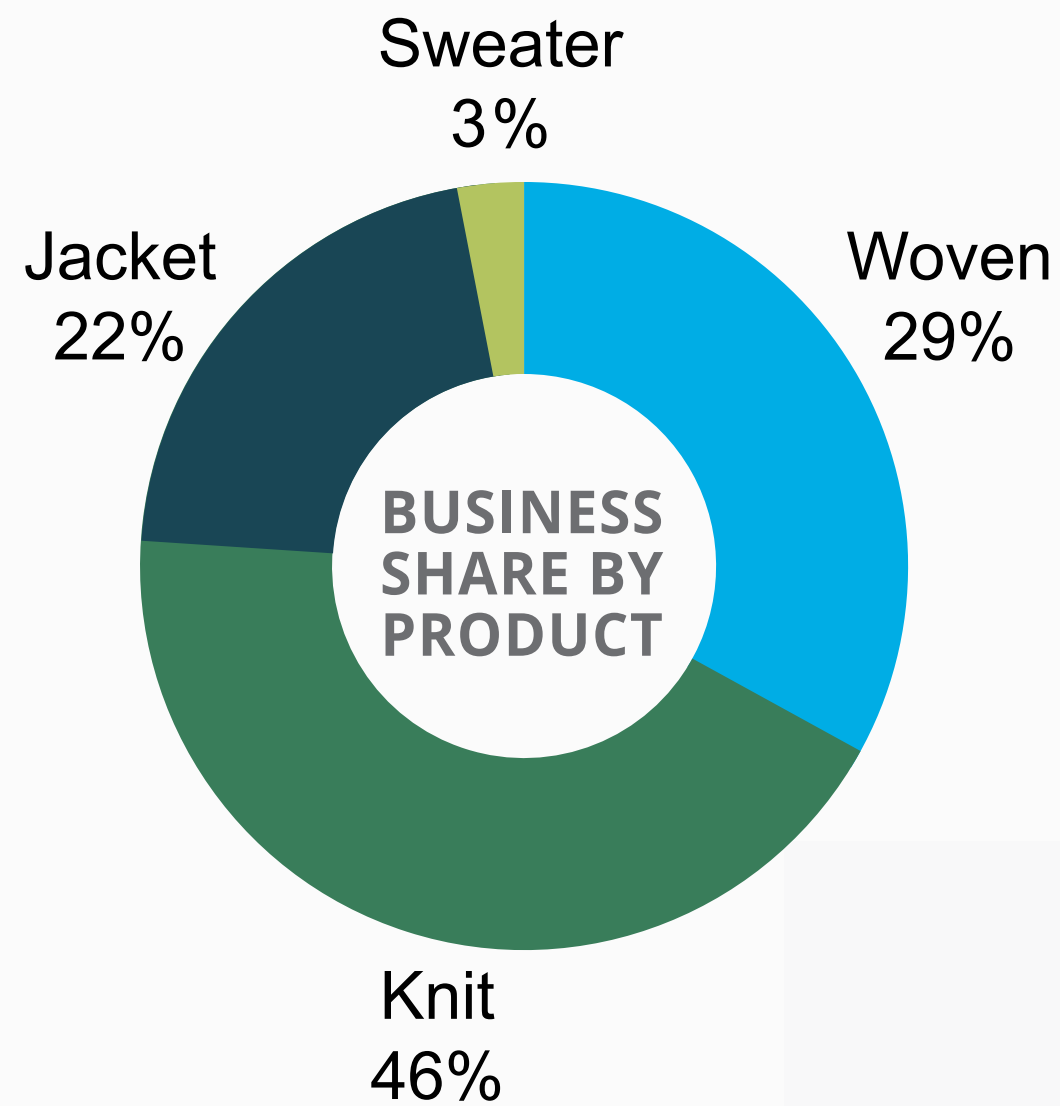
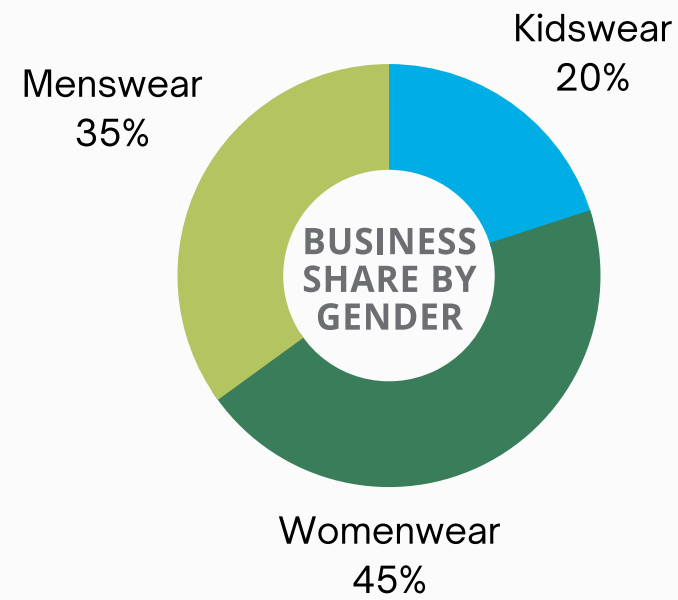
- **Collaboration**

we work together to achieve and individual goals.

- **Passion**

Our energy and enthusiasm contagious. We are inspired to make a lasting impact.

# BUSINESS SHARE



# PRODUCTION CAPACITY

## Circular Knit

Outsourcing Capacity - 21 Million Pcs/Year

## Woven

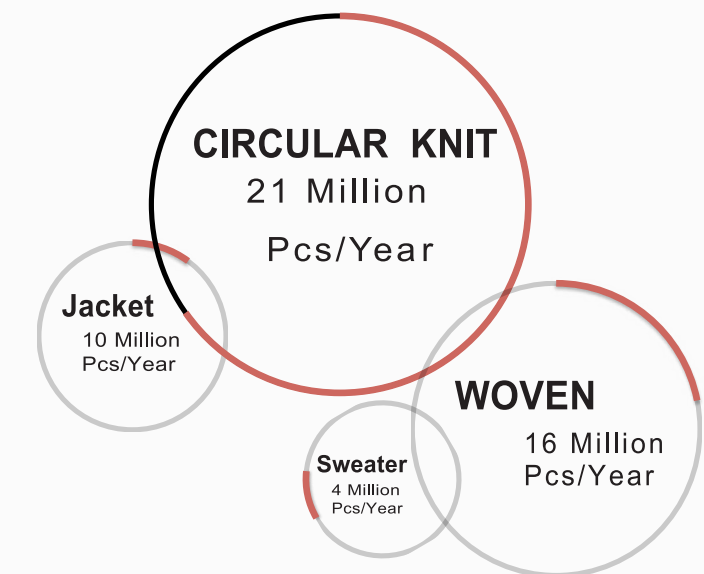
Outsourcing Capacity - 16 Million Pcs/Year

## Jacket

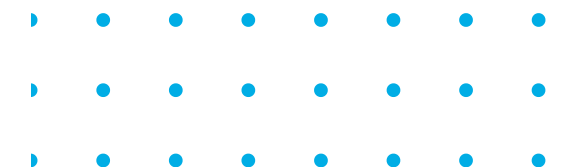
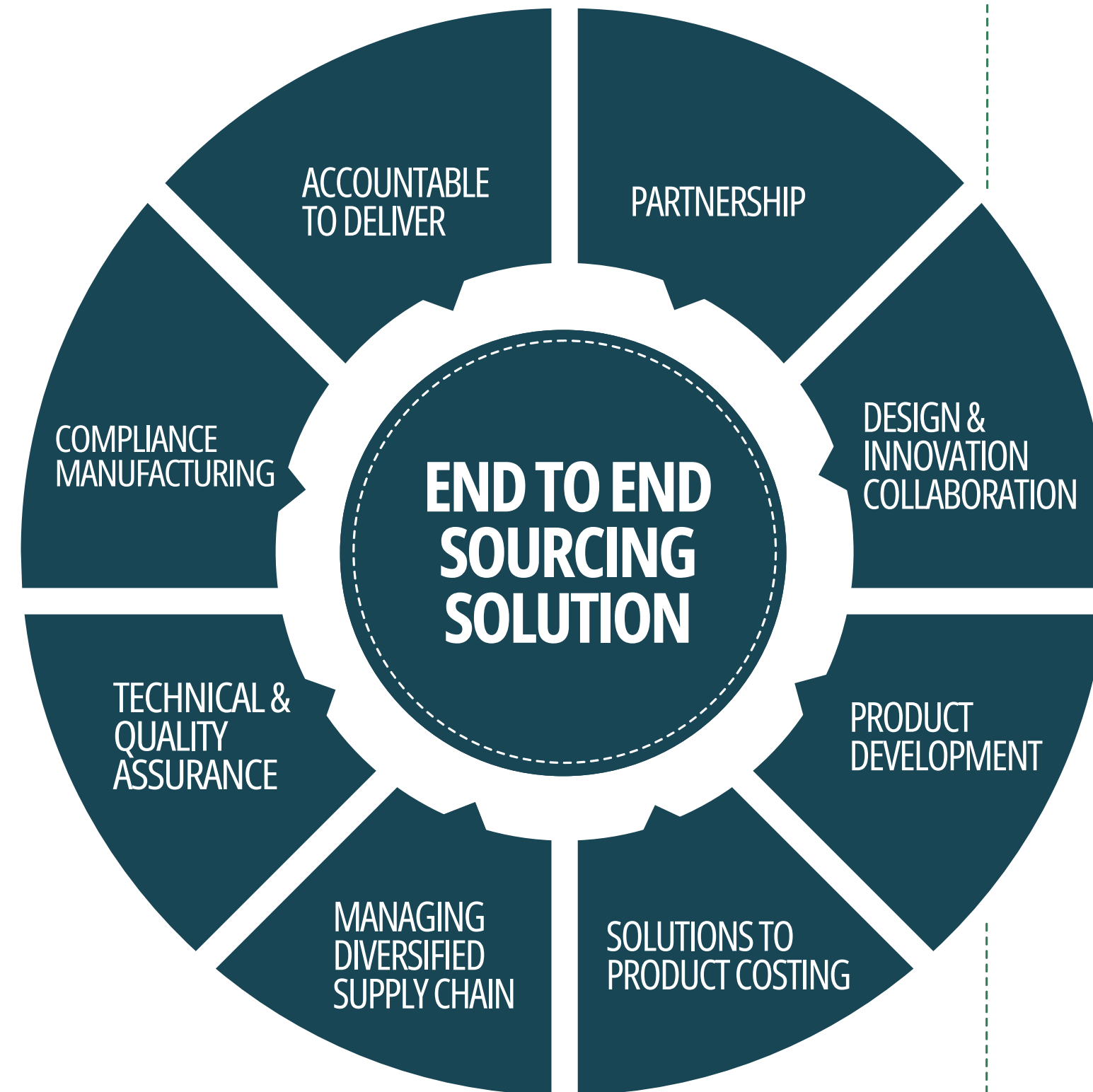
Outsourcing Capacity - 10 Million Pcs/Year

## Sweater

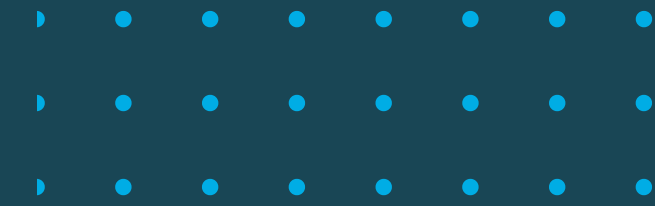
Outsourcing Capacity - 4 Million Pcs/Year



# WHAT WE OFFER







# OUR TEAM

## BUSINESS UNITS



Merchandising  
Product Development  
Negotiation  
Order execution  
Delivery

## INNOVATION

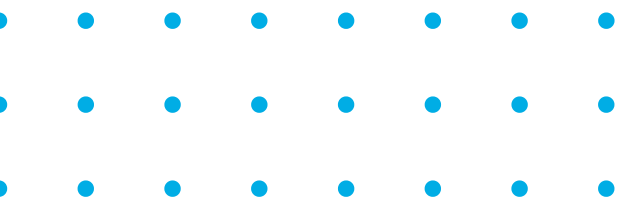
Trend Forecast  
Product Design  
Fabric Research  
3D Fit Technology  
Inhouse Sampling

## QUALITY ASSURANCE

Factory Compliance  
Technical Support  
ACCURACY of FIT & PPS  
Inline & Final  
Inspection Consistency

## SUPPORT

Finance  
Logistics IT  
HR







# Innovation in Design and Production

We invest in trend forecasting and market research capabilities to provide valuable insights to our clients. By staying ahead of the latest fashion trends and consumer preferences, we can help global brands anticipate market demands and develop innovative product lines.



# SUSTAINABLE AND ETHICAL SOURCING

We embrace and promote sustainable practices throughout the supply chain. We believe in responsibly sourcing materials, minimizing waste and supporting fair trade and labor practices to create a positive impact on the environment and society.





# SUPPLY CHAIN INTEGRATION AND DIGITALIZATION

By implementing digital tools for inventory management, order tracking, and communication, we can improve operational efficiency, reduce lead times, and enhance overall collaboration with global brands.



# LIST OF OUR FACTORIES



Factory Name	Certificate	Monthly Capacity
LYRIC INDUSTRIES (PVT.) LTD.	BSCI , SEDEX, ACCORD,OEKO - TEX	5,00,000 PCS
RUPA KNITWEAR LTD.	BSCI , SEDEX, ACCORD, OEKO-TEX	3,00,000 PCS
GARNISH SWEATERS LTD.	SEDEX	2,00,000 PCS
KAKADO BANGLADESH LTD.	OEKO TEX, SEDEX, BSCI, ACCORD, AUROOP	90,000 PCS
A AND A TROUSERS LTD	BSCI	65,000 PCS
PAKIZA KNIT COMPOSITE LTD.	OEKO TEX, SEDEX, BSCI, ACCORD, AUROOP, NEXT, TAKKO, INDITEX	6,85,000 PCS
VISION COMPOSITE KNIT LTD.	OEKO TEX, SEDEX, BSCI, ACCORD, AUROOP, NEXT, INDITEX	5,50,000 PCS
Hi -Tech Apparels Ltd.	LEED , BSCI , SEDEX, ACCORD	80,000 PCS

# We are also working with 20 other factories in Bangladesh with all certifications.



# EXECUTION



SHIPMENT TERMS : FOB, CIF, EX WORKS

LEAD TIME : 45 DAYS TO 120 DAYS

PAYMENT TERMS : LC, TT, CAD

# OUR INTEGRATED SERVICES





**Girl's & Ladies :**  
Pants, Shorts, Capris, Jacket, Vest, Knitted  
T-Shirt, Blouse, Sweater.

**Men's :**  
Pants, Basic Shorts, Cargo Shorts, Shirts, Jacket  
Knitted T-Shirt, Polo Shirt, Sweater.

**Kids & Boys :**  
Pants, Shorts, Knitted T-Shirt,  
Polo Shirt, Sweater.

**Our  
Products**



# KNIT PROJECTS

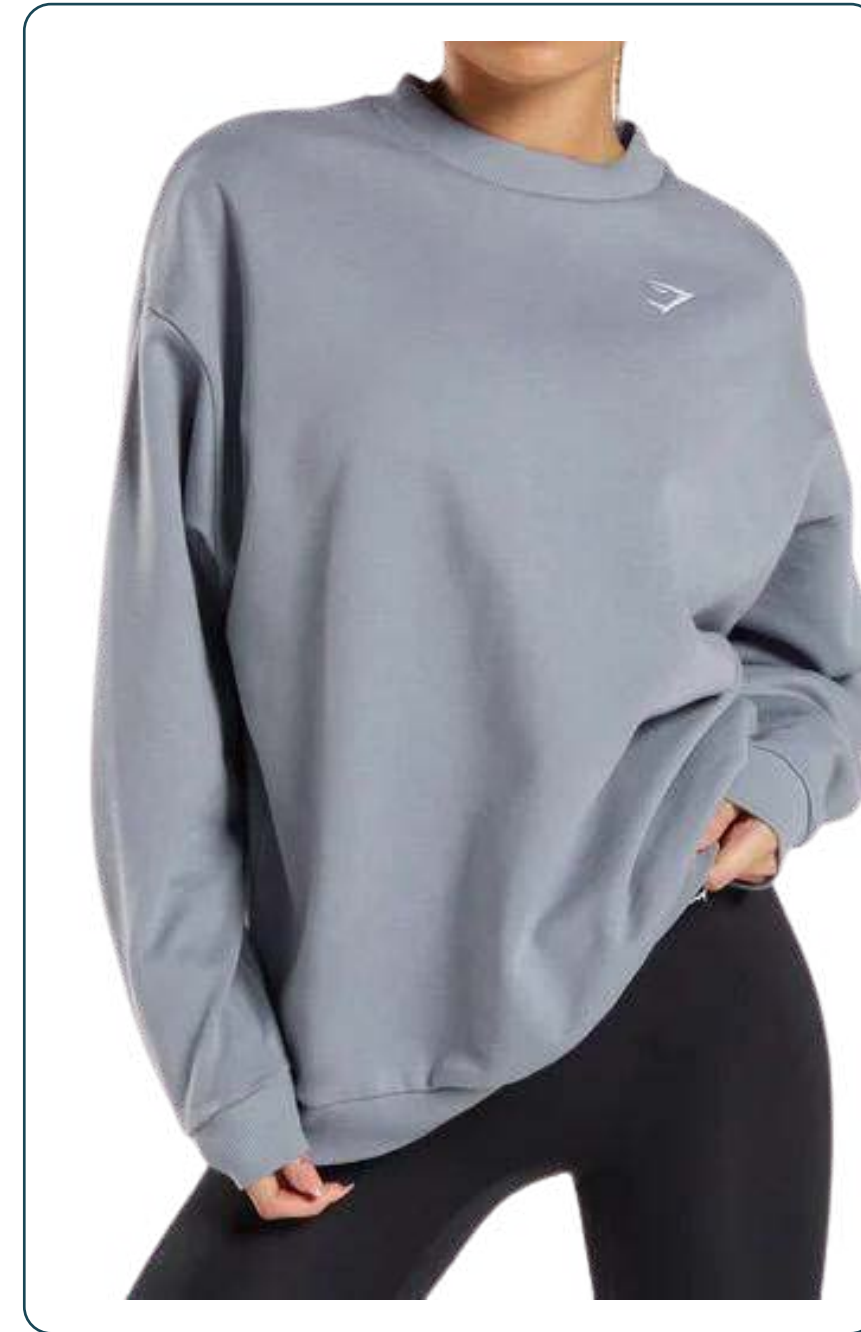
## PRODUCT STRENGTH





**KNIT**

**PRODUCT STRENGTH**



# JACKET

## PRODUCT STRENGTH





**WOVEN**

**PRODUCT STRENGTH**



**BOTTOM**

**PRODUCT STRENGTH**





# SWEATER

## PRODUCT STRENGTH



# KIDSWEAR

## PRODUCT STRENGTH





# UNDERWEAR

## PRODUCT STRENGTH



# UNDERWEAR

## PRODUCT STRENGTH





**TOWEL**

**PRODUCT STRENGTH**



# WHY CREDENCE SOURCING IS THE RIGHT PARTNER FOR YOU

RELIABILITY	PARTNERSHIP
INNOVATION	ADAPTABILITY
TRANSPARENCY	COST EFFICIENCY
WIDE SUPPLIER NETWORK	STREAMLINED SUPPLY CHAIN MANAGEMENT



# Together, we can!

Let's create positive change and preserve the beauty of nature for future generations.





# Thank You

## We Look forward to working with you